

Canal Open Space plan BKP Kanal, Brussels Capital Region

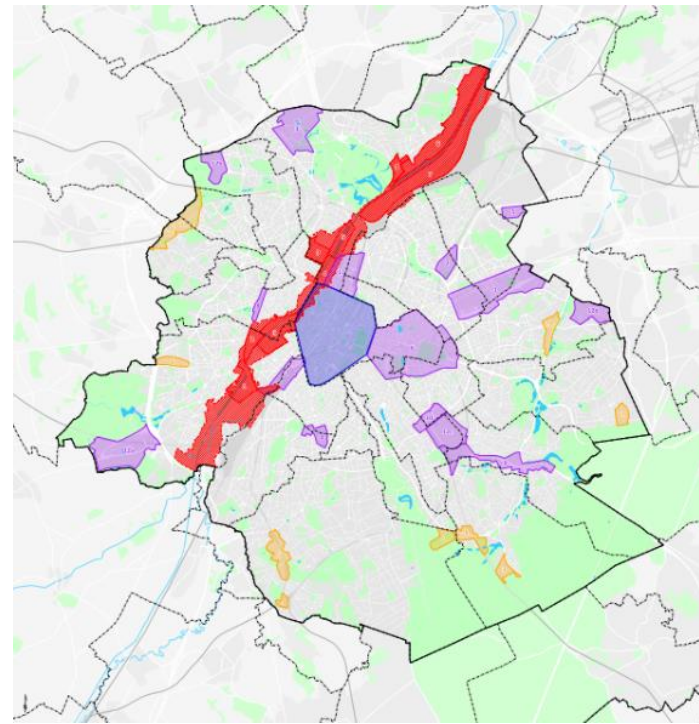
Vercammen Sven | project officer

Urban Greening and NNLT, De Wijnaert, 9.12.25

SITE CONTEXT

Characteristics (anno 2010)

- › 14 km long, 17% of BCR land area,
- › population (<200.000),
- › partial industrial area (S and N),
- › densely populated central area,
- › high % manual workers, young unemployment, high poverty; socially less-favored and culturally diverse area
- › high mineralization and pollution levels
- › inequity of green and public space,
- › segregation by the canal and 5 communes
- › back turned towards the canal (large open space)



PLANNING CONTEXT

Regional Plan for Sustainable development

- › 15 priority development poles, 9 local development poles
- › Canal area > largest strategic development zone (intervention perimeter)

PLANNING CONTEXT

PLAN CANAL

2014

“A SHARED VISION“

Guiding tool for the redevelopment
of the canal area

Responding to the demographic boom

Regenerate urban economic activity with new jobs

Creating a new urban centrality

REFLECTING ON THE INITIAL IMPLEMENTATION PERIOD OF THE KANAL PLAN

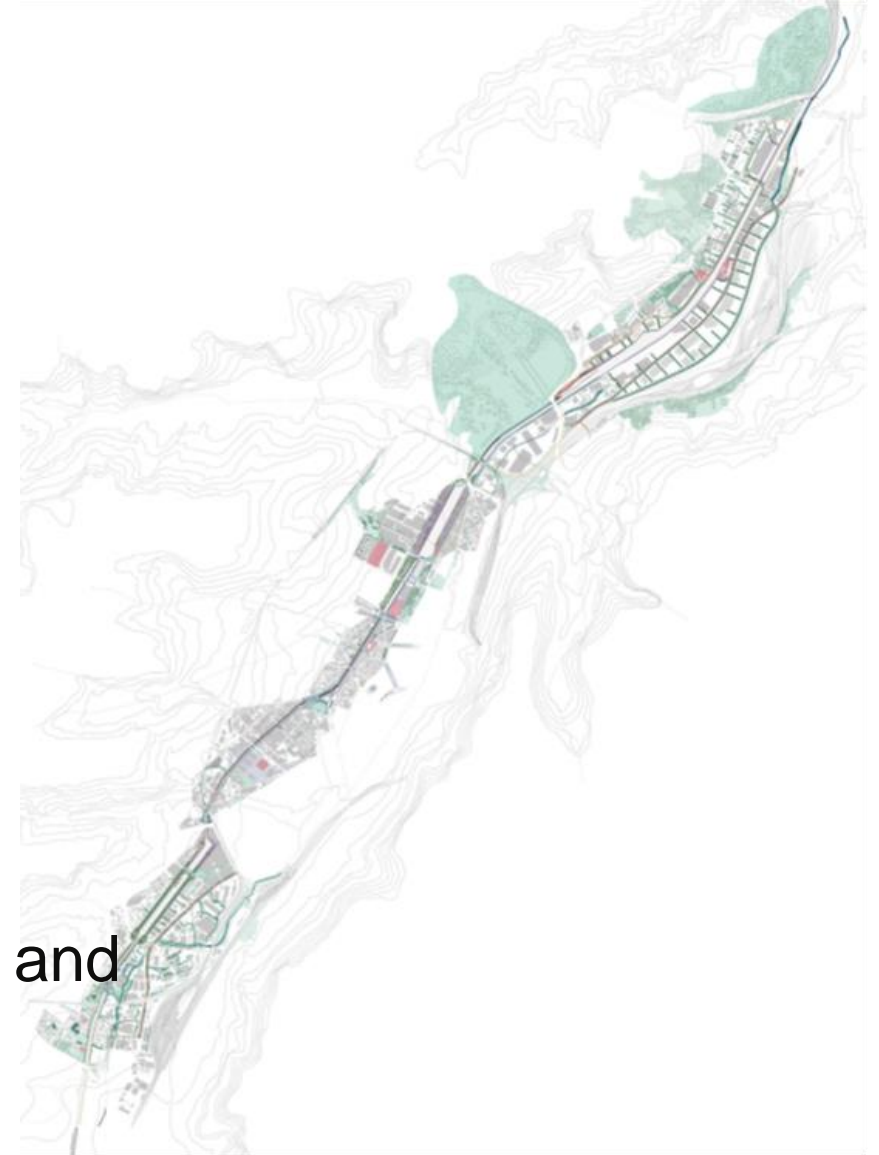
NEED for a detailed strategy for open space, integrating social and environmental ambitions

- To reinforce the identity and coherence of the new centrality
- to reduce inequities of green and open space,
- to reinforce the links between the neighbourhoods,
- to diminish ecological and social barrier effects, strengthening green and social networks,
- to create spaces for social cohesion
- to strengthen the quality and the multifunctional uses of the open spaces



THE CANAL OPEN SPACE PLAN AS A SHARED VISION BETWEEN ACTORS

- 2017: participatory proces > a shared vision
- negotiated by and balancing the NEEDS of sectoral regional and local actors concerned with the canal area, including :
 - various regional and local administrations,
 - private and public developers,
 - businesses and
 - NGO's.
- 2019: the strategic framework and guide completed and approved



A FLEXIBLE PLAN INTEGRATING NEW NEEDS

A flexible and evolving planning approach

To stay relevant new needs can be integrated:

- › evolving context and experience on the terrain,
- › new guidance and legislation,
- › thematic actualisation studies,
- › new insights,
- › governmental instructions or declarations,
- › project meetings,
- › feasibility studies,
- › environmental assessments,
- › participation with the public

STRATEGIC GUIDE

Ambitions and recommendations for

Regional Continuities

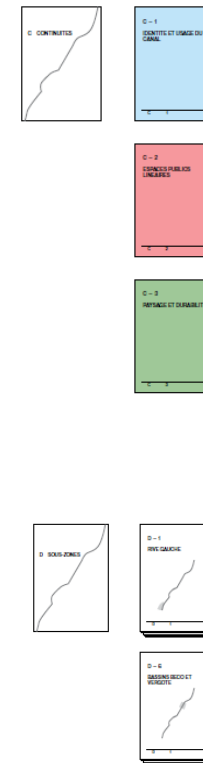
the quality and cohesion of the entire territory on

- Identity and usage
- Linear public spaces
- Landscape and sustainability

Local sub-zones and emblematic public spaces

- Subzones
- Emblematic public spaces

allowing for a specific approach adapted to their character, local contexts and needs



Thank you

Contact

Sven Vercammen

T: +32 0 000 00 00

E: svercammen@perspective.brussels

perspective.brussels

(Brussels Planning office)

Rue de Namur 59,
B-1000 Brussels

T: +32 2 435 42 00

E: info@perspective.brussels

 [perspective_bru](https://twitter.com/perspective_bru)

 [perspective.brussels](https://www.linkedin.com/company/perspective.brussels)

 [perspective.brussels](https://www.facebook.com/perspective.brussels)

 [perspective.brussels](https://www.instagram.com/perspective.brussels)

For further information about the Canal Open Space Plan, see

<https://perspective.brussels/en/urban-projects/canal-open-space-plan>

For further information about Perspective, subscribe to our newsletter



<https://perspective.brussels>